

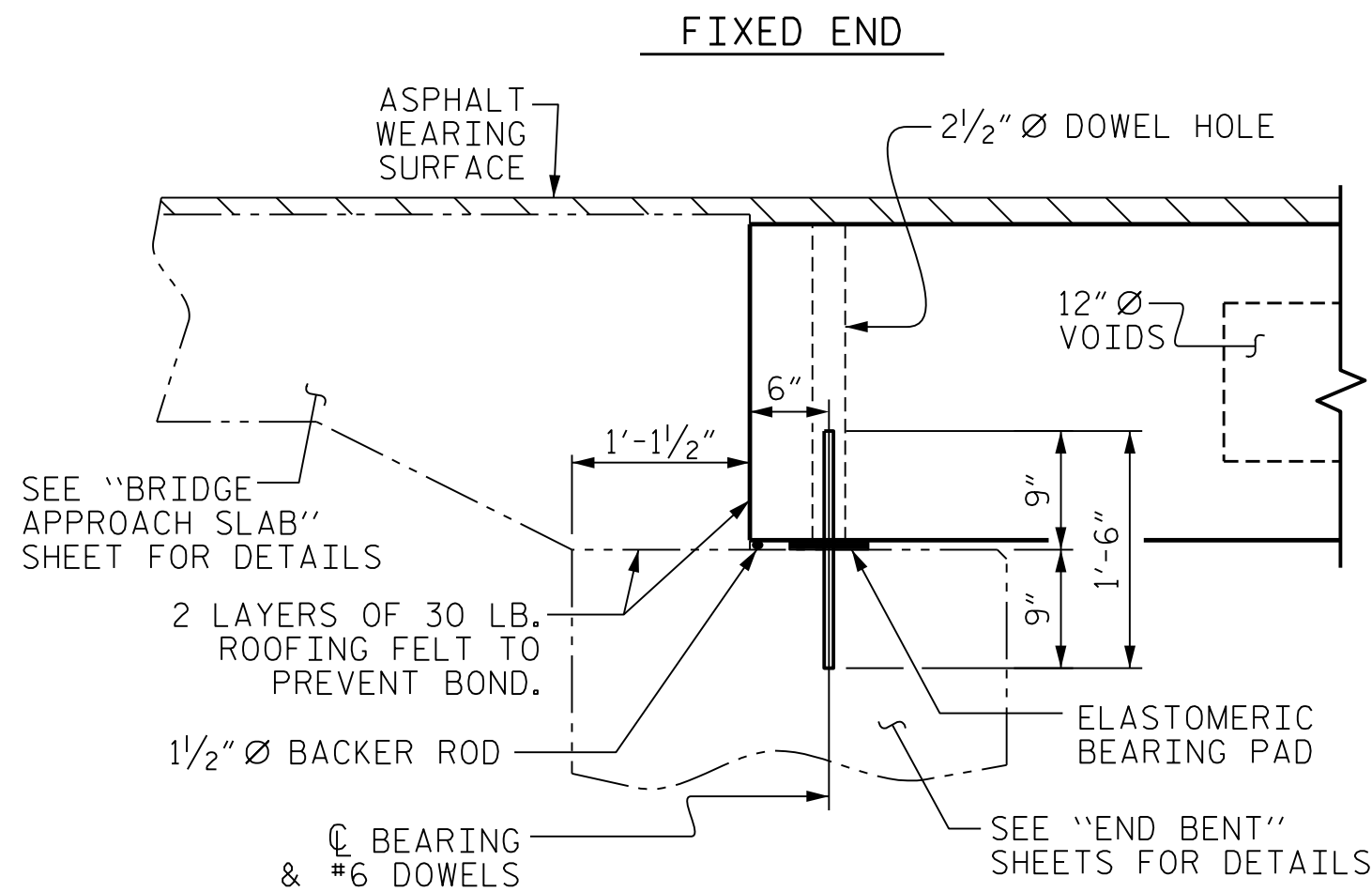
HALF SECTION  
AT INTERMEDIATE DIAPHRAGMS

### TYPICAL SECTION

HALF SECTION  
THROUGH VOIDS

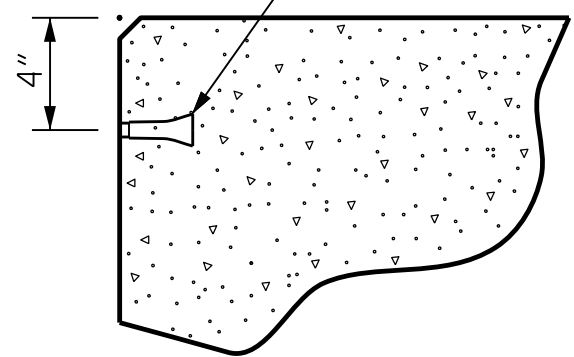
\* - THE MAXIMUM BARRIER RAIL HEIGHT AND ASPHALT THICKNESS IS SHOWN. THE HEIGHT OF THE BARRIER RAIL AND ASPHALT THICKNESS VARIES WHILE THE TOP OF THE BARRIER RAIL FOLLOWS THE PROFILE OF THE GUTTERLINE. FOR RAIL HEIGHT DETAILS AND ASPHALT THICKNESS, SEE THE "VERTICAL CONCRETE BARRIER RAIL SECTION" DETAIL.

Δ SEE DETAIL "A" ON SHEET S-01

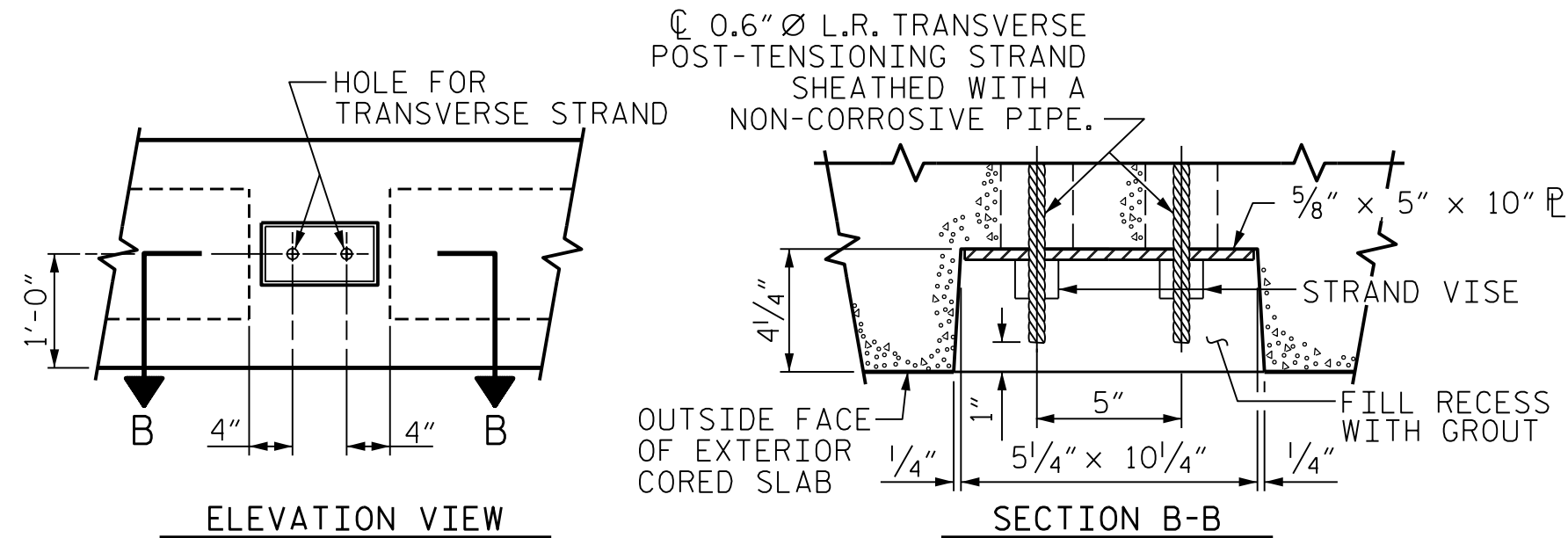


### SECTION AT END BENT

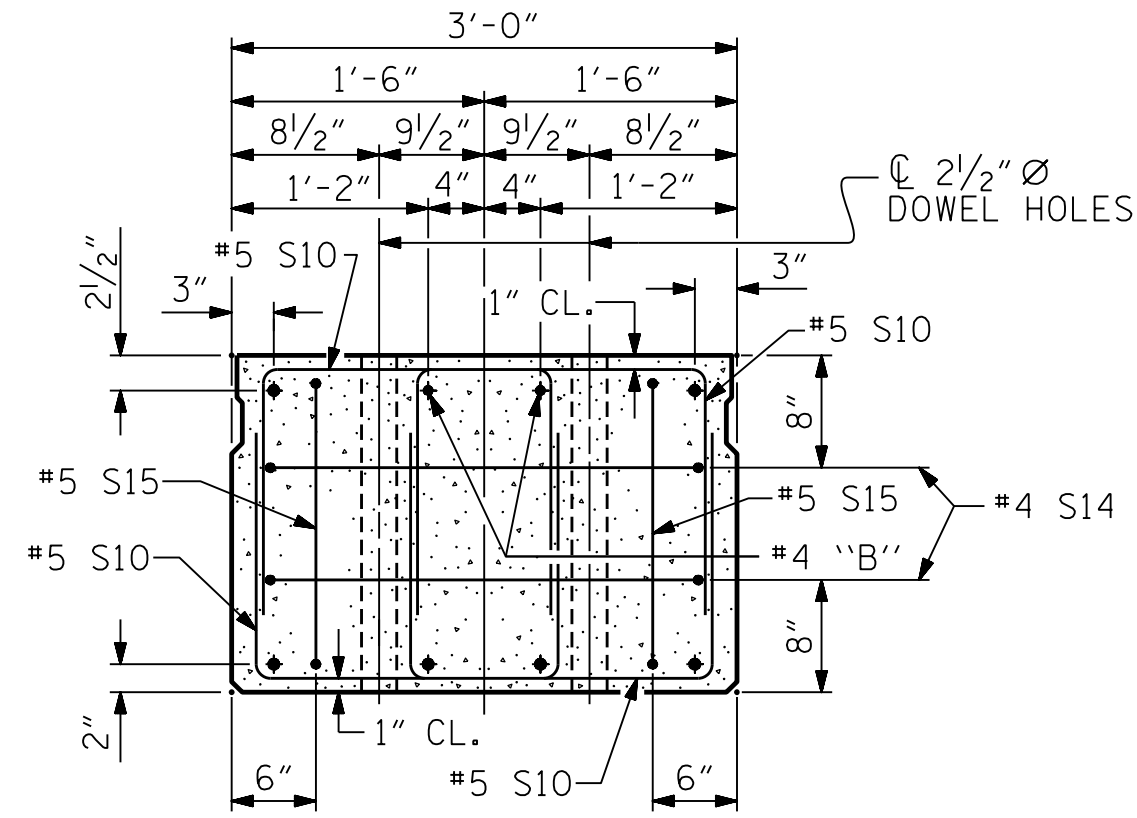
PERMITTED THREADED INSERT  
CAST IN OUTSIDE FACE OF  
EXTERIOR UNIT AND  
RECESSED 3/8". SIZE TO BE  
DETERMINED  
BY CONTRACTOR.



THREADED INSERT DETAIL

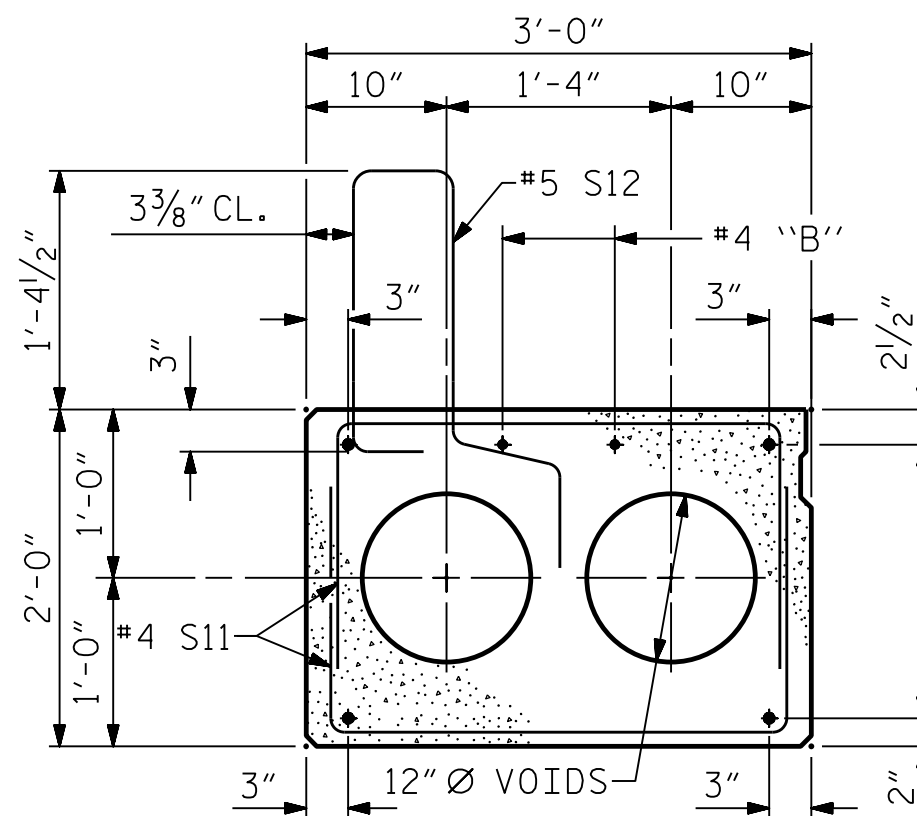


### GRAUTED RECESS AT END OF POST-TENSIONED STRAND-CORED SLABS



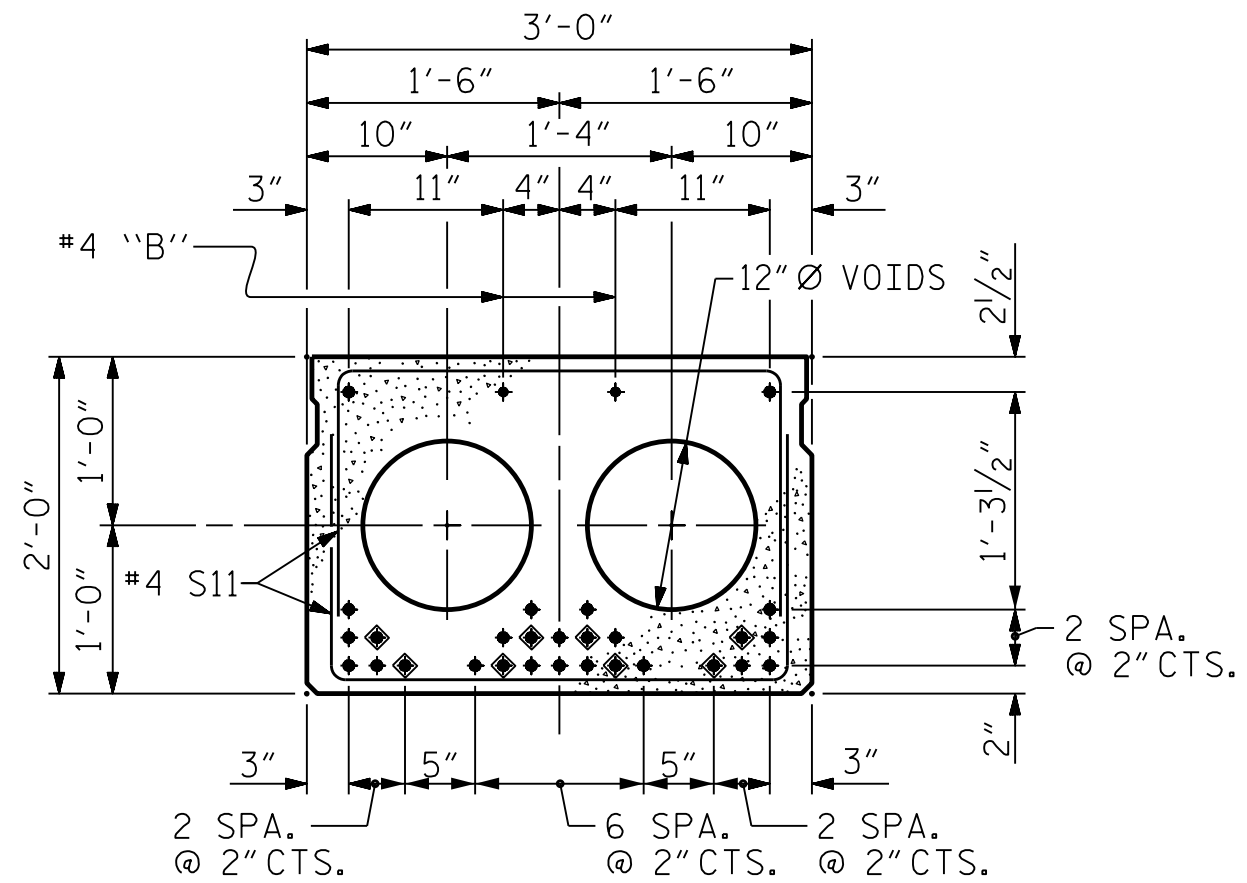
### END ELEVATION

SHOWING PLACEMENT OF DOUBLE STIRRUPS  
AND LOCATION OF DOWEL HOLES.  
(STRAND LAYOUT NOT SHOWN.)  
INTERIOR SLAB UNIT SHOWN-EXTERIOR SLAB  
UNIT SIMILAR EXCEPT SHEAR KEY LOCATION.



### EXTERIOR SLAB SECTION

(FOR PRESTRESSED STRAND LAYOUT, SEE  
INTERIOR SLAB SECTION.)

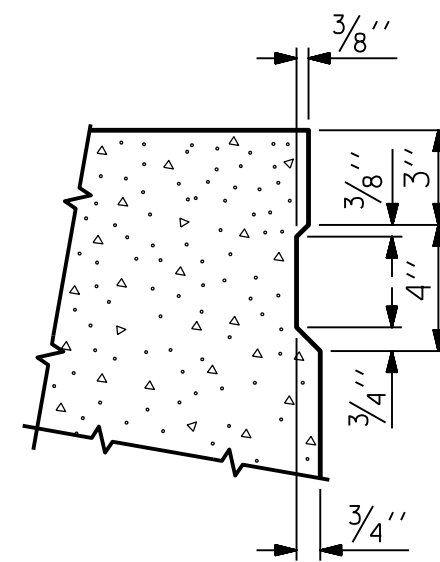


### INTERIOR SLAB SECTION (70' UNIT) (28 STRANDS REQUIRED)

### 0.6" Ø LOW RELAXATION STRAND LAYOUT

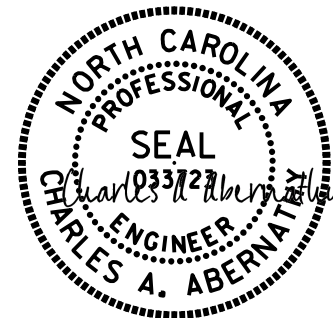
- ◆ BOND SHALL BE BROKEN ON THESE STRANDS FOR A DISTANCE OF 12'-0" FROM END OF CORED SLAB UNIT. SEE STANDARD SPECIFICATIONS, ARTICLE 1078-7.
- OPTIONAL FULL LENGTH DEBONDED STRANDS. THESE STRANDS ARE NOT REQUIRED, IF THE FABRICATOR CHOOSES TO INCLUDE THESE STRANDS IN THE CORED SLAB UNIT, THE STRANDS SHALL BE DEBONDED FOR THE FULL LENGTH OF THE UNIT AT NO ADDITIONAL COST. SEE STANDARD SPECIFICATIONS, ARTICLE 1078-7.

### DEBONDING LEGEND



### SHEAR KEY DETAIL

NOTE: OMIT SHEAR KEY ON OUTSIDE FACE  
OF EXTERIOR CORED SLABS.



12/15/2025

PROJECT NO. DF18314.2044195

HAYWOOD COUNTY

STATION: 13+39.86 -L-

SHEET 1 OF 3

STATE OF NORTH CAROLINA  
DEPARTMENT OF TRANSPORTATION  
RALEIGH

3'-0" x 2'-0" PRESTR.  
CONC. CORED SLAB UNIT  
90° SKEW TYP. SECTION

REVISIONS						SHEET NO. S-06
NO.	BY:	DATE:	NO.	BY:	DATE:	
1	--	--	3	--	--	TOTAL SHEETS 18
2	--	--	4	--	--	

**HR** HDR Engineering, Inc. of the Carolinas  
555 Fayetteville St., Suite 900 Raleigh, N.C. 27601  
N.C.B.E.L.S. License Number: F-0116

DOCUMENT NOT CONSIDERED FINAL  
UNLESS ALL SIGNATURES COMPLETED